

How Are We Swimming?

(They Told Me It Would Be Crawl, Walk, Run.)

Heather Noggle, October 5, 2024
CornCon



MCCoE is a 501(c)(3) non-profit corporation that trains the next generation of cybersecurity practitioners. Also working to secure the region, especially critical infrastructure.

...and small businesses...

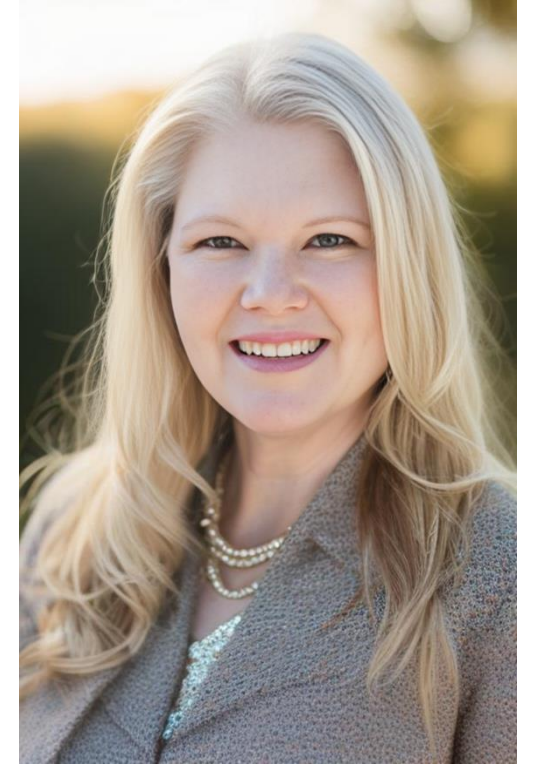




MISSOURI CYBERSECURITY CENTER OF EXCELLENCE

Who is Heather Noggle?

- Lifelong Technologist
- Integrator
- Systems Thinker
- Human Resources
- Cybersecurity Advocate
- Writer
- Black cat in another life





MISSOURI CYBERSECURITY CENTER OF EXCELLENCE

Training the Workforce

- Player/coach/mentor
- Cybersecurity Practitioners
- Influence on K-12 and their methodologies
- Interns from...everywhere. And programs.
- Volunteers
- Year-long program ending with Security+ and experience as a SOC Analyst and working with our other services.



Core Services

- Cybersecurity Assessments
- EDR/SIEM
- Penetration Testing



Funding

- A 1.6 million dollar grant to build the SOC and cover early rent payments.
- Donations
- Business Development/Services





MISSOURI CYBERSECURITY CENTER OF EXCELLENCE

Securing the Region, Redux



MISSOURI CYBERSECURITY CENTER OF EXCELLENCE

CYBERSECURITY AND DATA PROTECTION SERVICES

Comprehensive and regular reviews of IT infrastructure and business processes. Continuous monitoring and testing of networks, applications, and devices.

MCCoE provides actionable, core cybersecurity services and practices for organizations of all sizes while training students to be the next generation of practitioners.

-  **DISCOVER AND HANDLE SECURITY VULNERABILITIES**
MCCoE's penetration testing services simulate real-world cyber attacks. You control when and what can be probed. Safe penetration testing shows the strengths and weaknesses of your security posture so you can determine what to improve and in what order: Diminish your risk.
-  **ASSESS ORGANIZATION LEVEL OF CYBERSECURITY RISK**
Reduce your organization's risk exposure with a comprehensive cybersecurity risk assessment, based on the NIST Cybersecurity Framework. Know your risks so you can strategically combat them. Bolster your security posture by implementing the recommendations.
-  **CONTINUOUSLY MONITOR YOUR NETWORK FOR THREATS**
Our Security Operations Center (SOC) monitors your organization's network traffic for alerts and potential issues. Continuous review means response to concerns is immediate. Improve your cybersecurity defenses to reduce the risk of a successful cyber attack.

info@mccoe.org | Visit our website at <https://www.mccoe.org> to learn more and talk with us about affordable pricing and packages.
Call (417) 553-1020

524 N Boonville Ave, Springfield, MO 65806



MISSOURI CYBERSECURITY CENTER OF EXCELLENCE

WE PROVIDE CYBERSECURITY TO PROTECT ORGANIZATIONS

ABOUT US

MCCoE provides actionable, core cybersecurity services and practices for organizations of all sizes while training students to be the next generation of practitioners.

SECURING ORGANIZATIONS

- Authorize us to test your network for vulnerabilities. We offer in-depth penetration testing.
- Partner with us to assess your organization's overall cybersecurity risks.
- Contract us to monitor organization logs to detect incidents in real time.

TRAINING FOR STUDENTS

Students expand cybersecurity knowledge by working with professionals to monitor data and experience real-world operations.

COMMUNITY BENEFITS

Everyone benefits when core organizations are more secure online.

info@mccoe.org | Visit our website at <https://www.mccoe.org> to learn more and talk with our team
Call (417) 553-1020

524 N Boonville Ave, Springfield, MO 65806



MISSOURI CYBERSECURITY CENTER OF EXCELLENCE

PARTNER WITH US TO AMPLIFY CYBERSECURITY PROTECT THE FUTURE

MCCoE provides actionable, core cybersecurity services and practices for organizations of all sizes while training students to be the next generation of practitioners.

STUDENT FOCUSED COMMUNITY BUILDING

Your partnership with MCCoE enables learning and growth for students. With your support, their hands-on, real-world practice and learning in our Security Operations Center (SOC) and experience reviewing assessments for stakeholders and customers expands our community's cybersecurity talent and knowledge.

-  **SILVER**
 - Logo on MCCoE Website
 - Co-author MCCoE Content
 - Access MCCoE Whitepapers
-  **GOLD**
 - Silver Benefits
 - Use MCCoE Logo on your Website
 - Article in Print Media
-  **PLATINUM**
 - Gold Benefits
 - Committee Membership
 - Bi-annual Organization Vulnerability Scans
-  **DIAMOND** ONLY AVAILABLE FOR 2023
 - All Benefits
 - Featured in Vision Article in print media
 - Placement on MCCoE Board of Honor
 - Recognition as Cornerstone to building MCCoE

info@mccoe.org | Contact us to learn about additional and future benefits and sign on as a partner at <https://www.mccoe.org>
Call (417) 553-1020

524 N Boonville Ave, Springfield, MO 65806



What's With the Crazy Title?

It goes a little like this...

2019. Vision. Non-Profit. Grant. COVID. Wait.
Building Promise. Wait.

(I'd better tell it as a story)





MISSOURI CYBERSECURITY CENTER OF EXCELLENCE

- April 2024, took possession of the SOC
- May 2024, built the SOC – 10 desks, all of the computers
- June 2024, started early interns
- September 2024, started 17 additional interns

We definitely started walking – like the infants we are - but we fell of the pier.

And black cats really don't like swimming.

Our per-intern cost is \$15,000 for our year-long program. We're lacking donors.



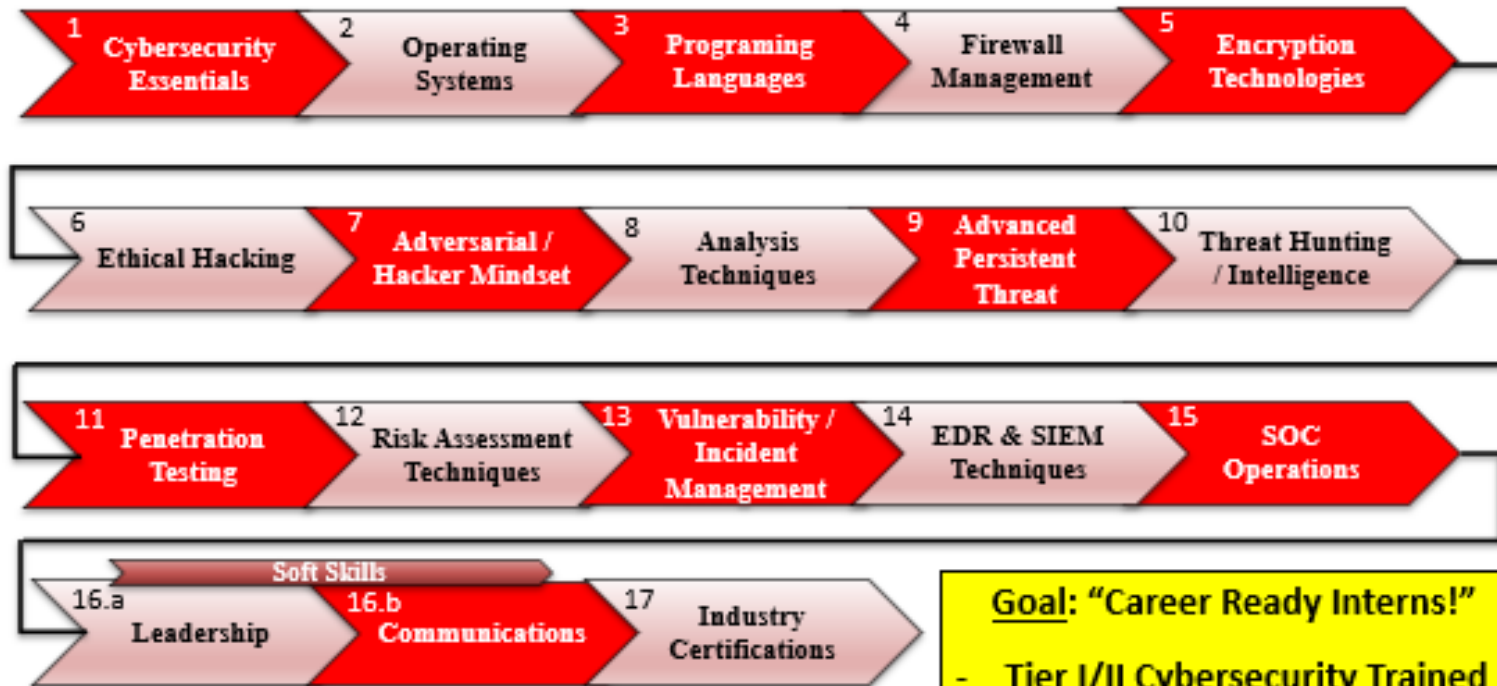
Swimming Phase



- 5 area colleges and universities
- As a non-profit, we're encouraged by all, funded by none.
- Demographics for our early interns - fascinating



Internship Training Journey Map



For the 17 we added this fall:

- 8 in 20s; 4 in 30s; 4 in 40s; 1 unknown
- 25% female
- Several from the community college
- 1 with a Secret clearance already
- Many already with their Security+, over half
- Many second career



2 SIEMs – evaluating – Connectwise and ActZero

EDR - SentinelOne and Crowdstrike

Ostendio – Assessments

Palo Alto – Firewall

EnterpriseKC (we get to evaluate their Cyber Range)

CIS – trying to find a way to help

ChannelPro Network – our interns write for them





Other Centers, Different Challenges

- EnterpriseKC
- Tulsa



The Challenge of Every Non-Profit

- The people who fund you are different than the people you serve
- Funding, funding, funding, and funding



The Road Ahead. (Walk, Run)

- Continue and Grow Operations
- Robust Workforce Development
- Staff up to 12 full-time people, including a SOC Manager and Training Coordinator
- 24x7x365 fully managed SOC
- Assessments for local government
- Impact with K-12 school districts
- And...



Build a program in a box.

Hand it to others and say, “Here, this works. Try it.”



Heather Noggle

<https://www.linkedin.com/in/heathernoggle/>



Friendly warning – if you don't ask questions, I will ask you questions.

